



# MONTHLY MEMBERSHIP PROGRESS REPORT

District 21 A

Results as of: 06/30/2018

GMT: WILLIAM PHILLIPI

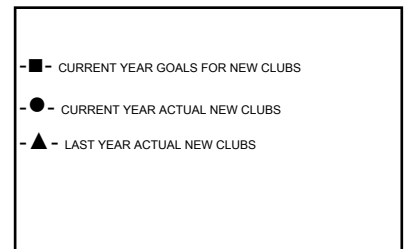
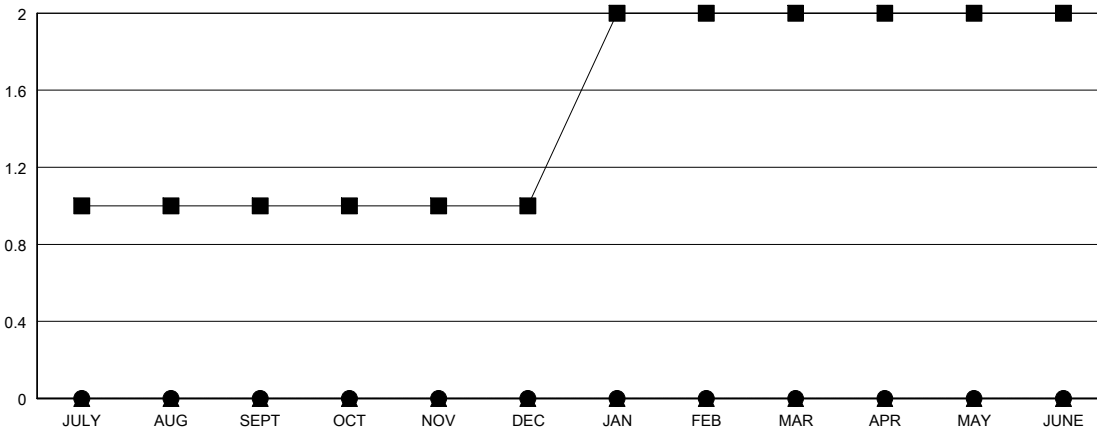
LOCATION ARIZONA

GMT CA

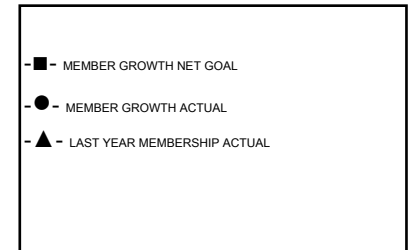
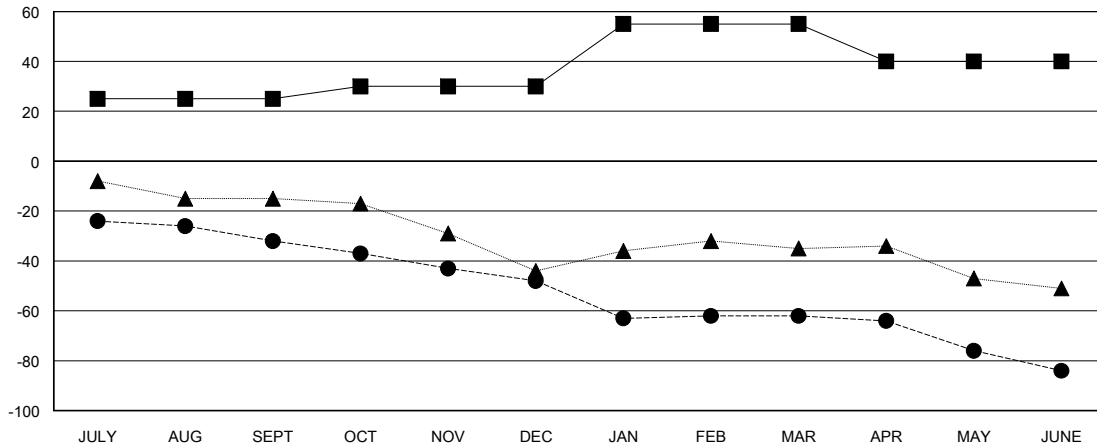
Clubs			
RESULTS FOR 2017-2018			
QUARTER	NEW CLUB GOAL	NEW CLUBS	DROPPED CLUBS
JULY/AUG/SEPT	1	0	2
OCT/NOV/DEC	0	0	0
JAN/FEB/MAR	1	0	0
APR/MAY/JUNE	0	0	0

Members			
RESULTS FOR 2017-2018			
QUARTER	MEMBER GROWTH NET GOAL	MEMBER GROWTH ACTUAL	DROPPED MEMBERS ACTUAL (including transfers)
JULY/AUG/SEPT	25	20	46
OCT/NOV/DEC	5	23	36
JAN/FEB/MAR	25	41	44
APR/MAY/JUNE	-15	38	53

GOALS AND ACTUAL NEW CLUBS CUMULATIVE



GOALS AND ACTUAL MEMBERS CUMULATIVE



DROPPED CLUBS: 2
------------------

23 CLUBS OF 34 ADDED 1 OR MORE NEW MEMBERS
--

GENDER DISTRIBUTION	
MALE	361 (56.23%)
FEMALE	281 (43.77%)
Women Percentage Fiscal Year Goal: 43%	

DROPPED MEMBERS	
DECEASED	22
CLUB CANCELLED	0
OTHER	157
<b>TOTAL</b>	<b>179</b>

[CLICK HERE FOR CUMULATIVE MEMBERSHIP DATA](#)

TOTAL FAMILY UNIT MEMBERS	0
FAMILY MEMBERS PAYING HALF DUES	0